

KCS CINEMA GUIDE

& more



Listen to Sound...



KELONIK CINEMA SOUND

JUNE 2025

SUMMARY

Edito

4

Traditional
Configuration

6-13

Sound
experience

5

Immersive
Sound
Configuration

14-17

Music & Lobby
Speakers

18-19

Wall & Ceiling
brackets
Diaphragm
& Re-cone kits

20-23

Digital Analog
Converters

24-25

Amplifiers

26-29

Warranty &
Product Index

30-35

Editio

We never would have predicted such a success when we first began introducing our line of speakers to the film business some thirty years ago. About 200.000 speakers have been placed in various cinema auditoriums worldwide by our distributors and integrators since 1990! KCS offers the greatest acoustic system solutions for each type of venue, from independent movie theaters or municipal auditoriums to the biggest multiplexes and even extraordinarily enormous theaters. The current development of the film business calls for improving the sound quality in the theaters, and the introduction of new sound formats presents fresh chances to wow moviegoers with incredible experiences once more. As a sound expert, KCS wishes to provide you with the benefit of our experience by offering you a new sort of guidance that will assist you in making an initial decision from our extensive range.

Sound experience

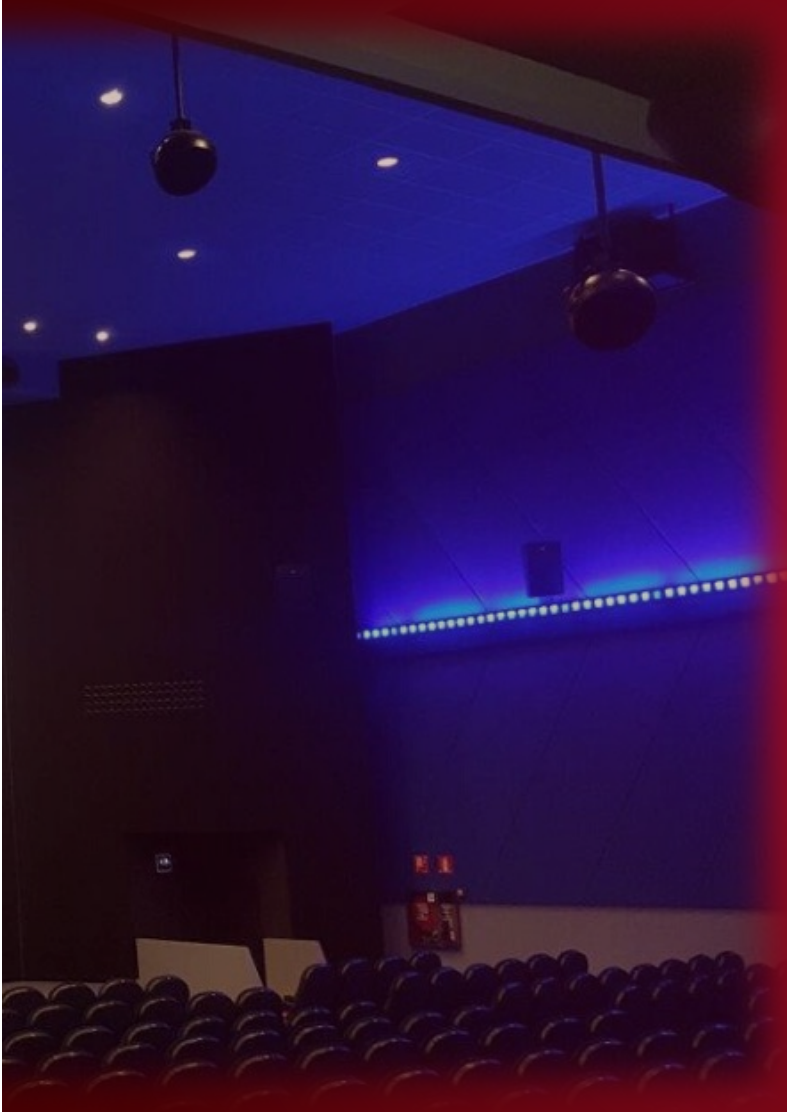
KCS is a firm with years of experience and a sizable global customer base that specializes in cinema sound systems. KCS has satisfied client requests for optimum features, outstanding performances at their best value, a variety of models to suit every market need, and effective service via years of ongoing research and new product development.

The layout of cinemas varies greatly based on the customs of the country and the standards of quality that the exhibitors demand.

We computed the number of seats in « Standard » theaters and entered the volume in cubic meters as well, since everyone in the auditorium should be able to hear the sound.

- Small size theater (Up to 120 seats)
- Intermediate size theater (up to 300 seats)
- Big size theater (up to 500 seats)

For exceptional auditoriums (Up to 3500 seats) KCS can provide tailor made solutions.
Please contact your local integrator and/or our Technical support dept.

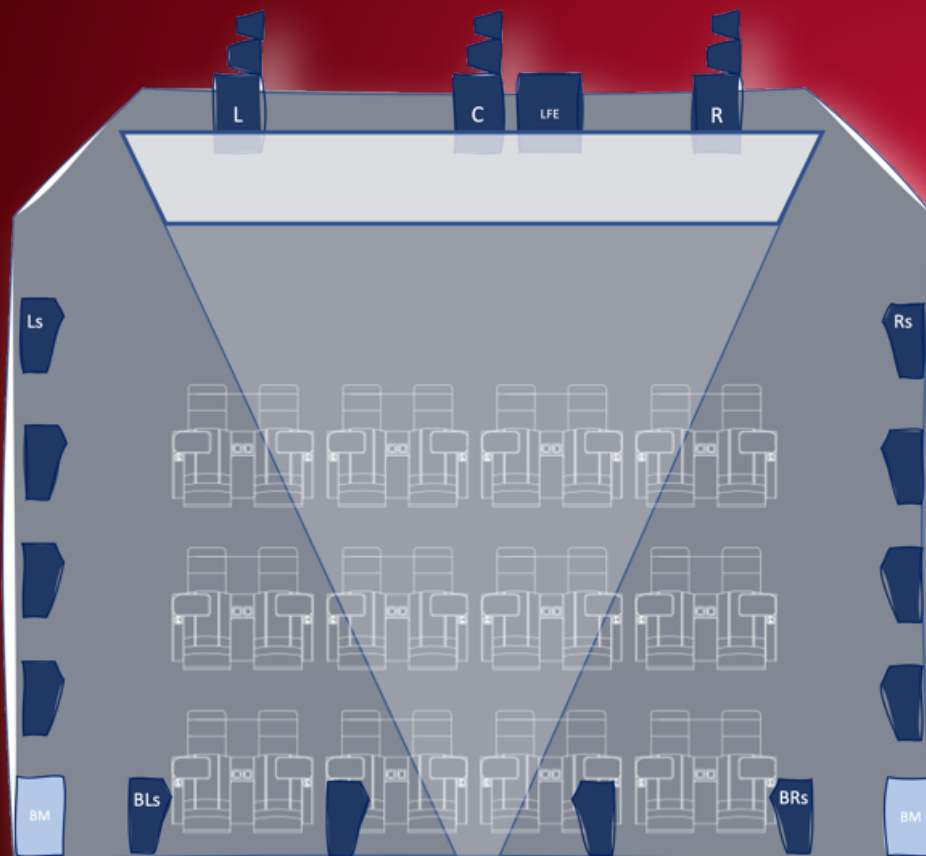


TRADITIONAL CONFIGURATION


5.1

7.1


Bass Management




In a cinema, sound is essential for total immersion. Different audio configurations create a rich and enveloping experience:

 **5.1:** This system consists of five speakers (front Left, Centre, front Right, Surround Left and Surround Right) and a Subwoofer (.1).

It delivers a well-balanced and immersive surround sound.

 **7.1:** This setup adds two Rear Surround speakers to the six in a 5.1 system, enhancing spatialization and sound precision for an even more realistic experience.

 **7.1 with Bass Management:** Here, Low frequencies are optimized and redirected to additional Surround Subwoofers, improving dialogue clarity and boosting sound effects. With these technologies, every movie becomes a true auditory experience, immersing viewers at the heart of the action!

Main Screen speakers



S-8902

Screen Speakers for Conventional & Immersive configurations								
Position in Theater	Qty	Max. Distance from speaker to room back	Volume of theater m3		Passive	2 Way Bi-Amplified	3 Way Bi-Amplified	3 Way Tri- Amplified
			From	To				
L / C / R	3 or more depending the width of the screen	<= 12	100 m3	350 m3	S-1500			
		12	500 m3	900 m3	S-7600			
		12	500 m3	950 m3			S-7601	
		14	250 m3	800 m3	S-1800	S-1801		
		14	800 m3	1200 m3			S-7801	
		14	800 m3	1200 m3				S-7802
		15	500 m3	1200 m3	S-2000			
		15	500 m3	1300 m3	S-2000D			
		15	500 m3	1350 m3		S-2001		
		15	500 m3	1400 m3		S-2001D		
		15	500 m3	1450 m3	S-2300			
		16	850 m3	1400 m3			S-7901	
		16	850 m3	1500 m3				S-7902
		16	500 m3	1500 m3	S-2400			
		17	500 m3	1550 m3		S-2401		
		17	1000 m3	2800 m3			S-8801	
		17	1000 m3	2850 m3				S-8802
		20	1400 m3	2700 m3	S-2500			
		20	1600 m3	2700 m3		S-2501		
		20	1000 m3	2900 m3			S-8901	
		25	1000 m3	3100 m3				S-8902
		30	2500 m3	4200 m3	S-3000			
		30	2500 m3	4400 m3		S-3001		
		35	3000 m3	4800 m3		S-5000		
		35	3000 m3	5000 m3				S-8002
		40-45	5000 m3	and above				S-8502

TRADITIONAL CONFIGURATION

SubWoofer						
Position in Theater	Volume of theater m ³		Qty	Standard space behind screen (min. 60/85 cm)	Qty	Reduced space behind screen (min. 30 cm)
	From	To				
LFE	100 m3	300 m3	1	CX-118...	1	C-118-PLP
	300 m3	500 m3	1	CX-118...	1	C-118-PLP
	500 m3	1000 m3	1	CX-218...	2	C-118-PLP
			2	CX-118...	3	C-118-PLP
	1000 m3	2000 m3	2	CX-218...		
	2000 m3	3000 m3	3	CX-218...		
	3000 m3	4000 m3	4	CX-218...		
	4000 m3	5000 m3	5	CX-218...		
	5000 m3	6000 m3	6	CX-218...		
	Estimate One additional CX-218+ for every additional 1000 m3					



C-118-PLP

Bass Management / Surround Subwoofers				
Position in Theater	Volume of theater m ³		Qty	Standard space behind screen (min. 60/85 cm)
	From	To		
Bass Management / Surround Subwoofers	100 m3	300 m3	2	C-115-AR
	300 m3	500 m3	2	C-115-AR
	500 m3	1000 m3	2	C-115-AR
			2	C-118-PLP
	1000 m3	2000 m3	2	C-118-PLP
	2000 m3	3000 m3	2	CX-118-...R
	3000 m3	4000 m3	2	CX-218-...R
	4000 m3	5000 m3	4	CX-218-...R
	5000 m3	6000 m3	6	CX-218-...R



C-115-AR



Component Evolution

Component	Current Spec.	New Component	New Proposal
S-15-P	400 W RMS	S-15-FV	500 W RMS

Applicable to :

S-1500

S-2401

S-7901

S-7902

S-1800

S-7600

S-8801

S-8802

S-1801

S-7601

S-8901

S-8902

S-2400

S-7801

S-7802

New range of subwoofers

Reference	Component	Current Spec.	New Reference	New Component	New Proposal
C-118-H	S-1846-H	700 W RMS	CX-118	S-18-FW	800 W RMS
C-218-H	S-1846-H	1400 W RMS	CX-218	S-18-FW	1600 W RMS
C-118-A	S-1846	1000 W RMS	CX-118+	S-18-LX	1000 W RMS
C-218-A	S-1846	2000 W RMS	CX-218+	S-18-LX	2000 W RMS

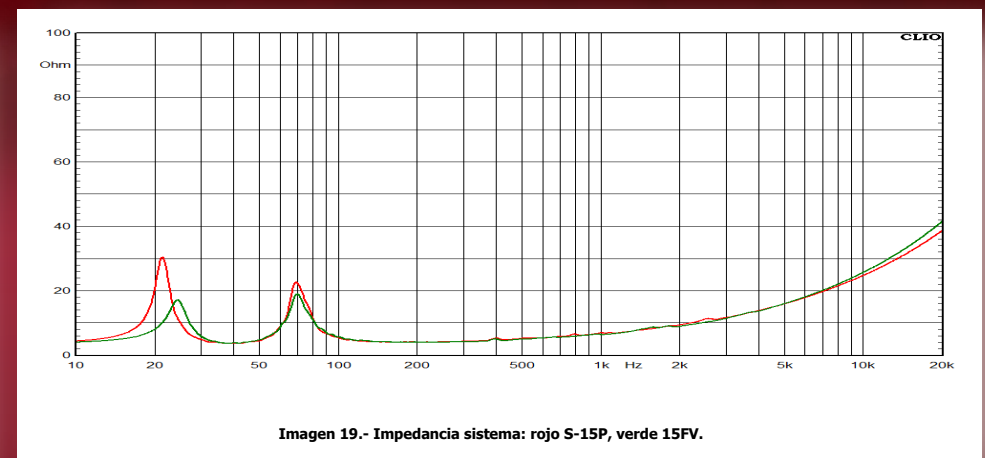
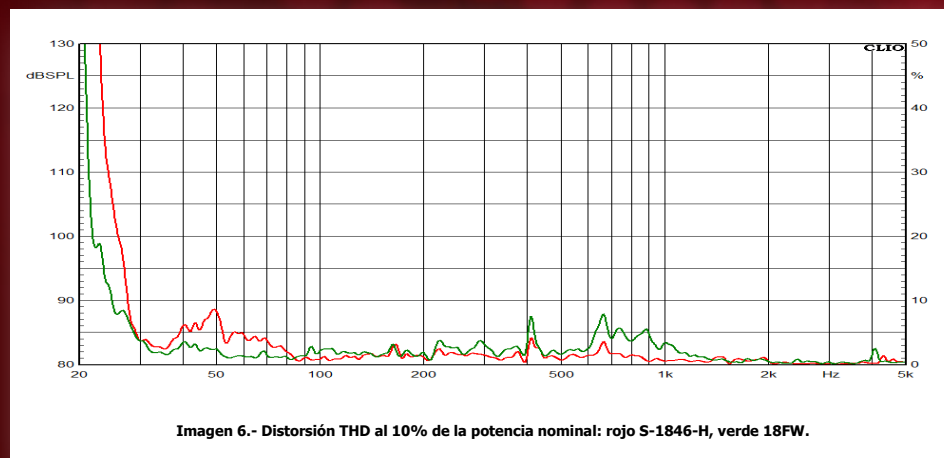
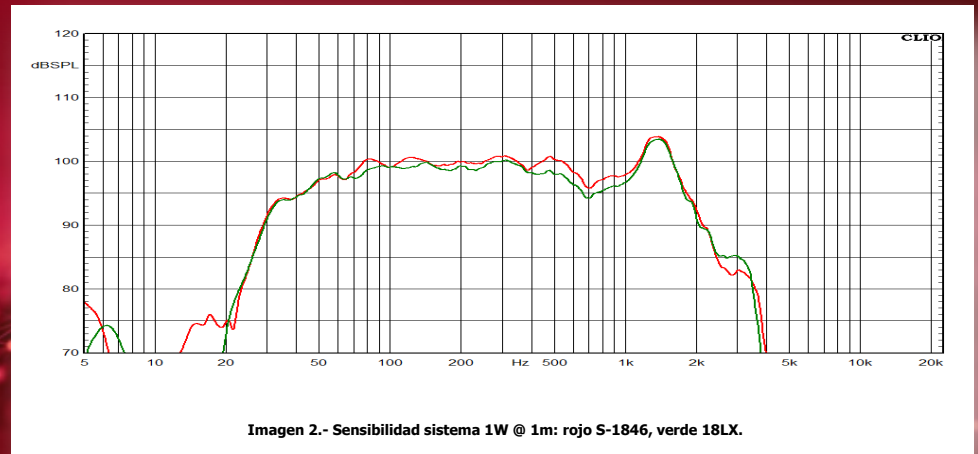
Higher dynamics ; Lower distortion



S-18-FW

S-18-LX

S-15-FV

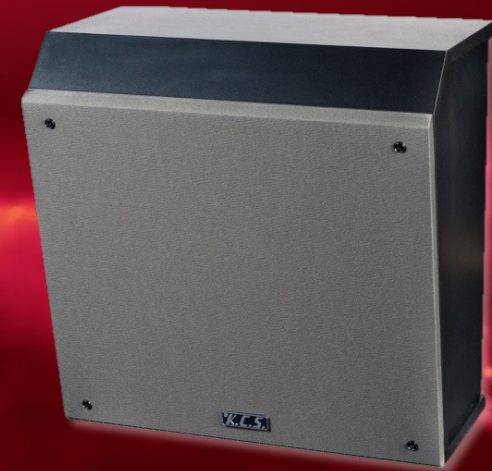




Surrounds for Small to Medium size Auditoriums

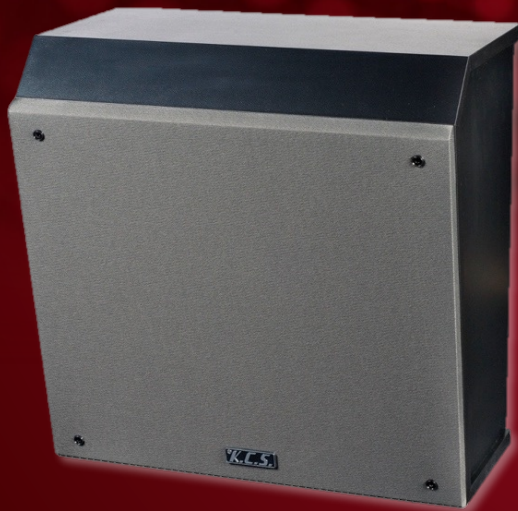
SR-8-AN

Frequency range	40 Hz – 20 kHz
Nominal impedance	8 Ohms
AES Power (1)	125 W
Sensitivity 1 W/1 m (4)	91 dB SPL

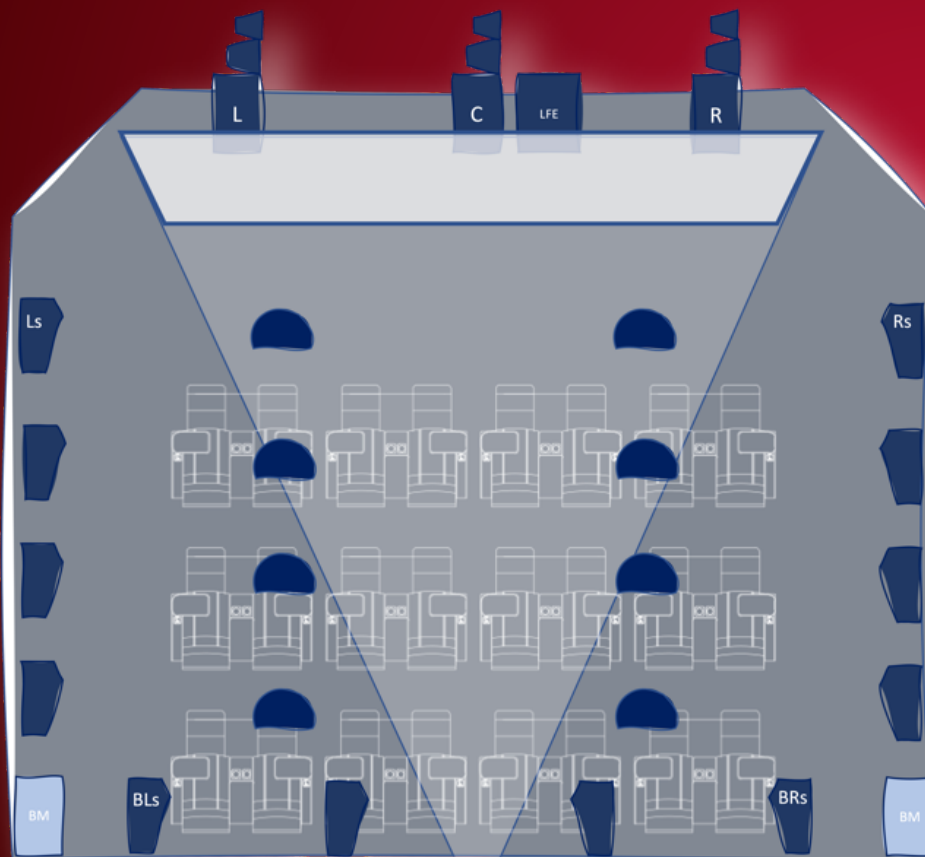


SR-10-AN

Frequency range	50 Hz – 18 kHz
Nominal impedance	8 Ohms
AES Power (1)	200 W
Sensitivity 1 W/1 m (4)	96 dB SPL




IMMERSIVE SOUND CONFIGURATION



Object-Based Immersive Sound in Cinema: A Sonic Revolution!

With technologies like Dolby Atmos, DTS:X, and Holosound (widely used in Asian markets), sound is no longer confined to traditional channels. It becomes a dynamic, three-dimensional element, precisely positioned in space.

 **Dolby Atmos:** Adds a vertical dimension with ceiling speakers, allowing sounds to move freely around and above the audience.

 **DTS:X:** Delivers ultra-precise spatialization without a fixed speaker setup, adapting the sound mix to each theater.

 **Holosound:** An immersive technology developed in Asia, optimizing sound diffusion for spectacular realism and surround effects.

5.1

7.1

DOLBY
ATMOS

These innovations turn every screening into a unique sensory experience, immersing audiences in action with sound that truly surrounds them!



SR-27-N
IN VERTICAL USE

SR-27-N
IN HORIZONTAL USE



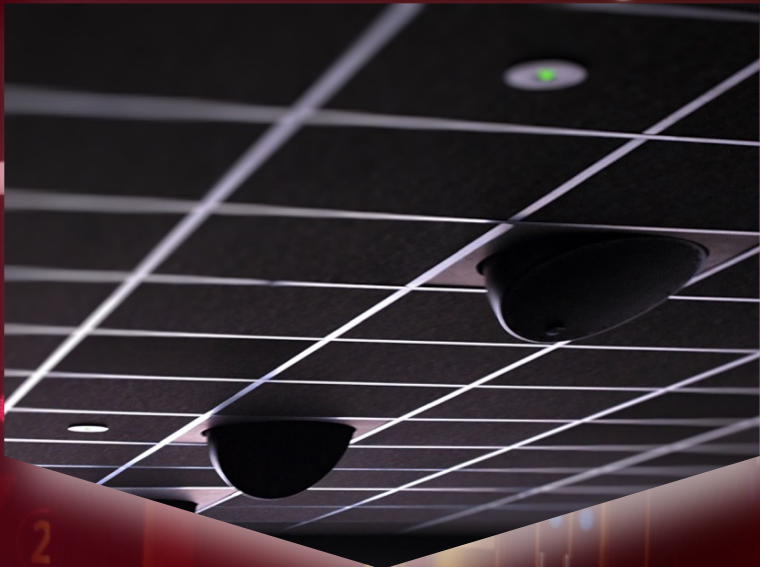
Frequency range	60 Hz – 20 kHz
Nominal impedance	8 Ohms
AES Power (1)	200 W
Sensitivity 1 W/1 m (4)	94 dB SPL

Surrounds for Medium to Big size Auditoriums



SR-12-N

SR-10-AN can also be used in Medium size Auditoriums. Please check on page 13 for specifications.



	SR-12-N	TC-12	TC-14
Frequency range	50 Hz – 20 kHz	63 Hz – 20 kHz	63 Hz – 20 kHz
Nominal impedance	8 Ohms	4 Ohms	4 Ohms
AES Power (1)	300 W	300 W	500 W
Sensitivity 1 W/1 m (4)	97 dB SPL	96 dB SPL	97 dB SPL

5.1

7.1

DOLBY
ATMOSSR-28-N
SR-29-N

	SR-28-N	SR-29-N
Frequency range	50 Hz – 20 kHz	50 Hz – 20 kHz
Nominal impedance	8 Ohms	8 Ohms
AES Power (1)	360 W	400 W
Sensitivity 1 W/1 m (4)	96 dB SPL	99 dB SPL

	SR-50	SR-60
Frequency range	50 Hz – 20 kHz	50 Hz – 20 kHz
Nominal impedance	8 Ohms	8 Ohms
AES Power (1)	360 W	600 W
Sensitivity 1 W/1 m (4)	97 dB SPL	101 dB SPL

SR-50
SR-60

Music & Lobby Speakers



SR-7



Adjustable
bracket
included



TECHNICAL DATA

Frequency Range (-10 dB)	65 Hz - 22 kHz
Nomial impedance	8 Ohms
POWER CAPACITY	
Continuous Pink Noise ⁽¹⁾	100 W
Continous Program	200 W
Sensitivity 1W / 1m	89 dB SPL
Crossover frequency	4000 Hz
Horizontal beamwidth	80°
Vertical beamwidth	70°
Dimensions (H x W x D)	34 x 15 x 15 cm
Net weight	2,6 Kg

(1) Based on a 2 hours test using a continuous 6 dB crest factor pink noise signal band limited according to IEC 268-1 (1985).



SOUND WITH SOUL



DECO 8 BLACK
MAGNETIC COVER

Passive speakers' line

MODEL DAS AUDIO	DECO 5 47950-Z	DECO 6 47955-Z
System Type	Dual Cone	Two-Way
Line Voltage (100 V)	20 W	40 W
Frequency Range	70 Hz - 20 kHz	60 Hz - 20 kHz
On-axis Sensitivity 1 W / 1 m	89 dB SPL	90 dB SPL
Nominal Impedance	8 ohms	8 ohms
Connectors	Spring Terminal	Spring Terminal
Dimensions (Depth x Diameter)	70 x 205 mm 2.76 x 8.1 in	80 x 230 mm 3.15 x 9 in
Cutout Diameter	166 mm 6.54 in	194 mm 7.64 in
Weight	0.73 kg 1.59 lb	1.19 kg 2.62 lb

DECO 8 47960-Z
Two-Way
60 W
50 Hz - 20 kHz
90 dB SPL
8 ohms
Spring Terminal
97 x 275 mm 3.8 x 10.8 in
238 mm 9.37 in
1.58 kg 3.46 lb

Low Voltage transformer's line

MODEL DAS AUDIO	DECO 5-T 47951-Z	DECO 6-T 47956-Z	DECO 8-T 47961-Z
System Type	Dual Cone	Two-Way	Two-Way
Line Voltage (100 V)	3-6-X W	5-10-15 W	10-20-30 W
Line Voltage (70 V)	1.5-3-6 W	2.5-5-7.5 W	5-10-15 W
Frequency Range	70 Hz - 20 kHz	60 Hz - 20 kHz	50 Hz - 20 kHz
On-axis Sensitivity 1 W / 1 m	89 dB SPL	90 dB SPL	90 dB SPL
Nominal Impedance	Line	Line	Line
Connectors	Screw Terminal	Screw Terminal	Screw Terminal
Dimensions (Depth x Diameter)	70 x 205 mm 2.76 x 8.1 in	80 x 230 mm 3.15 x 9 in	97 x 275 mm 3.8 x 10.8 in
Cutout Diameter	166 mm 6.54 in	194 mm 7.64 in	238 mm 9.37 in
Weight	0.9 kg 1.98 lb	1.35 kg 2.97 lb	1.9 kg 4.20 lb

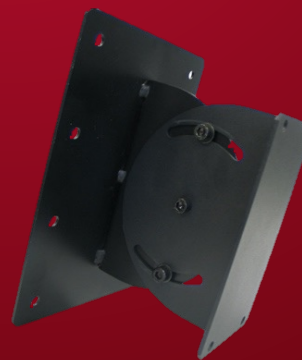


DECO 8

Wall & Ceiling brackets

Speaker	Wall bracket (Flushed)	Wall bracket (Vertical orientation only)	Wall bracket (Vertical & Horizontal orientation)	Ceiling bracket (Vertical & Horizontal orientation)
SR-7		(included) AX-4RM AXU-SR-7		
SR-8-2	SP-SR-8-2		AXW-1	
SR-8-AN	(included) Hooks	SP-SR-8-AN		
SR-10-AN	(included) Hooks	SP-SR-10-AN	SP-SR-10/12-PA	
SR-12-N	(included) Hooks	SP-SR-12-N	SP-SR-10/12-PA	
SR-20		SP-SR-20	SP-SR-20-PA	SP-SR-20-T
SR-25			SP-SR-25-P	SP-SR-25-T
SR-26-N		SP-SR-26-P1	SP-SR-26-P2	SP-SR-26-T
SR-27-N	SP-SR-27-P0	SP-SR-27-P1	SP-SR-27-P2	SP-SR-27-T
SR-28-N		SP-SR-28/29-P1	SP-SR-28/29-P2	SP-SR-28/29-T
SR-29-N		SP-SR-28/29-P1	SP-SR-28/29-P2	SP-SR-28/29-T
SR-50	SP-SR-50/60-P0	SP-SR-50/60-P1	SP-SR-50/60-P2	SP-SR-50/60-T
SR-51-P	SP-SR-50/60-P0	SP-SR-50/60-P1	SP-SR-50/60-P2	SP-SR-50/60-T
SR-60	SP-SR-50/60-P0	SP-SR-50/60-P1	SP-SR-50/60-P2	SP-SR-50/60-T
SR-61-P	SP-SR-50/60-P0	SP-SR-50/60-P1	SP-SR-50/60-P2	SP-SR-50/60-T

Speaker	Wall bracket (Flushed)	Wall bracket (Vertical orientation only)	Wall bracket (Vertical & Horizontal orientation)	Ceiling bracket (Vertical & Horizontal orientation)
TC-12			SP-TC-12/14-P	SP-TC-12/14-P
TC-14			SP-TC-12/14-P	SP-TC-12/14-P
TC-12-T (60x60)				(included) Kit with: SP-TC-12/14-T PT-60x60
TC-14-T (60x60)				(included) Kit with: SP-TC-12/14-T PT-60x60
TC-12-T (120x60)				(included) Kit with: SP-TC-12/14-T PT-120x60
TC-14-T (120x60)				(included) Kit with: SP-TC-12/14-T PT-120x60
C-115-AR		SP-C-115-AR-P1		



Diaphragm & Re-cone kits

Driver	Speaker system using this driver	Available Diaphragm & Re-cone kit
S-12-P	S-1200 (Discontinued) SR-29-N	GM-S-12-P
S-15-FV	S-1500 S-1800 / S-1801 S-2400 / S-2401 S-7600 / S-7601 S-7801 / S-7802 S-7901 / S-7902 S-8801 / S-8802 S-8901 / S-8902 SR-20 (Discontinued)	GM-S-15-FV
S-15-P	S-1500 S-1800 / S-1801 S-2400 / S-2401 S-7600 / S-7601 S-7801 / S-7802 S-7901 / S-7902 S-8801 / S-8802 S-8901 / S-8902 SR-20 (Discontinued)	GM-S-15-P
S-15-MI	S-2300	GM-S-15-MI
S-15-SX	C-115-AR	GM-S-15-SX
S-1535	S-2000 / S-2001 S-2000D / S-2001D S-2500_SP-2 / S-2501_SP-2 S-2500_SP-2F / S-2501_SP-2F S-3000_SP-3 / S-3001_SP-3 S-5000	GM-S-1535
S-18-FW	S-8002 S-8502 CX-118 CX-118-R CX-218 CX-218-R	GM-S-18-FW
S-18-LX	CX-118+ CX-118-R+ CX-218+ CX-218-R+	GM-S-18-LX
S-18-P	C-118-PLP	GM-S-18-P
S-1846	C-118-A (Discontinued) C-118-AR (Discontinued) C-218-A (Discontinued) C-218-AR (Discontinued)	GM-S-1846
S-1846-H	C-118-H (Discontinued) C-118-HR (Discontinued) C-218-H (Discontinued) C-218-HR (Discontinued)	GM-S-1855
S-1855	S-8000 (Discontinued) S-8500 (Discontinued)	GM-S-1855





Driver	Speaker system using this driver	Available Diaphragm & Re-cone kit
S-420-8	S-8002 S-8502	TO BE DETERMINED
S-701	S-1200 (Discontinued) S-1500 S-1800 / S-1801 S-2300 S-7600 / S-7601 S-7801 / S-7802 S-7901 / S-7902 SR-20 (Discontinued) SR-29-N	GM-S-401
S-801	S-2000 / S-2001 S-2000D / S-2001D S-2500_SP-2 / S-2501_SP-2 S-2500_SP-2F / S-2501_SP-2F S-3000_SP-3 / S-3001_SP-3 S-5000	GM-S-801
S-901	S-8000 (Discontinued) S-8500 (Discontinued)	GM-S-901
ND-801	S-8000 (Discontinued) S-8500 (Discontinued)	GM-S-801
S-10/75	S-2400 / S-2401 S-7801 / S-7802 S-7901 / S-7902 S-8801 / S-8802 S-8901 / S-8902 S-8002 S-8502	GM-S-10/75
S-34	SR-10-AN SR-12-N SR-25 (Discontinued) SR-26-N (Discontinued) SR-28-N SR-50 SR-51-P (Discontinued) TC-12 TC-14	GM-S-34
S-60	SR-60 SR-61-P (Discontinued)	GM-S-60

A Large Range of Digital Analog Converters

For cinemas purchasing audio processing and licensing that would be included in new cinema servers, KCS is introducing a new line of Digital Analog Converters.

When using AES3 digital server outputs for 7.1 setup, this new line of DAC will convert in Analog either 8 channels, 12 channels when using bi-amplification, or even 16 channels when using tri-amplification.



DIGITAL CINEMA SERVERS
WITH
DIGITAL AUDIO PROCESSING INSIDE

KCS DIGITAL ANALOG CONVERTER

KCS OR ANY OTHER BRAND OF
ANALOG AMPLIFIERS

From Passive Speakers to Tri-Amplified Setup



For immersive audio, the 32 channels version, which enables AES67 digital server outputs, can help convert up to 256 channels using one or several DAC in Star or Daisy chain.



KCS DAC RANGE	KCS DAC-I808	KCS DAC-I12012	KCS DAC-I16016	KCS DAC-I32032
TECHNICAL SPECIFICATIONS				
Digital Input	8	12	16	32
AES Input	AES 3	AES 3	AES 3	AES 67
Digital Input connector	(1) RJ-45	(2) RJ-45	(2) RJ-45	(2) RJ-45
Suitable for 5.1 / 7.1	YES	YES	YES	YES
Suitable for immersive (above 16 channels DCP - Atmos or DTS:X)	-	-	-	YES
Analog Output	8	12	16	32
Analog Output connector	(1) DB-25	(2) DB-25	(2) DB-25	(4) DB-25
TECHNICAL INDEX				
Dynamic Range(24bit)	114 dB			
Highest Sampling Rate	192 kHz			
Signal to Noise Ratio	114 dB			
Isolation Between Channels	111 dB			
Total Harmonic Distortion (THD+N)	- 60 dB			

Available in



KELONIK CINEMA SOUND

Amplifiers

Rated Power / model	KCS C-900	KCS C-1500	KCS C-2700	KCS C-4000	KCS C-4-1200
1 kHz (HIA) with 0,5% THD					
4 Ω (per channel)	2 x 420 W	2 x 750 W	2 x 1350 W	2 x 2600 W	4 x 600 W
8 Ω (per channel)	2 x 300 W	2 x 500 W	2 x 1000 W	2 x 1500 W	4 x 420 W
8 Ω Bridge (mono)	840 W	1500 W	2700 W	5150 W	2 x 1200 W
Performance					
Frequency Response (@ 1 W)	20 Hz - 20 kHz, +0-1 dB				
Total Harmonic Distortion (THD)	< 0,5%, 20 Hz - 20 kHz				
Intermodulation Distortion 60 Hz and 7 kHz at 4:1 from full rated output to -30 dB	= / < 0,35%				
Slew Rate	> 20 V / μ s				
Voltage Gain	33 dB	36 dB	37 dB	37 dB	31 dB
Damping Factor (8 Ω) 10 Hz - 400 Hz	> 200				
Signal to Noise Ratio (below rated power, 20 Hz to 20 kHz. A-weighted)	> 100 dB				
Crosstalk (below rated power)					
@ 1 kHz	-75 dB				
@ 20 kHz	-58 dB				
Input sensitivity for full rated power					
@ 8 Ω	0,775 V or 1,4 V				
Input impedance (nominal)					
Balanced	20 k Ω				
Unbalanced	10 k Ω				
Consumption					
1/3 Consumption @ 230V	4,50 A	7,50 A	9,20 A	15,20 A	10,00 A
1/8 Consumption @ 230V	2,20 A	3,10 A	4,50 A	8,30 A	6,00 A
Construction					
Protection	Protection against Short circuits, no-load, on/off muting, RF interference				
Ventilation	Flow-through ventilation from front to back				
Cooling	Internal heat sinks with forced air. Fan cooled, speed regulated, thermal protection				
Power cable specification	Plug : 10 A, 250 V - Wire : 3 x 1,0 mm ² KCS C-4000 : For a safety current ramp up a 25 A with D type fuse should be installed.				
Chassis size (mm) / W x D x H	2U 482 x 239 x 88	2U 482 x 239 x 88	2U 482 x 297 x 88	2U 482 x 297 x 88	2U 482 x 227 x 88
Net Weight	10,5 Kg	10,5 Kg	15,8 Kg	21,6 Kg	13,1 Kg

CLASS H AMPLIFIERS

Professional power amplifiers in the C series include a stable circuit and a sensible cooling design. A thorough component selection, a simple production procedure, and a lengthy burning test guarantee the amplifier's superior performances and reliability.



Monitored 4 Channels Amplifier

CLASS D AMPLIFIER

Specifically designed for cinemas, this amplifier delivers crystal-clear sound while offering high efficiency, resulting in energy savings and making it an environmentally sustainable solution.



Features of KCS DM-4-1600 : 4-Channel Amplifier !

- 1U rack - Attachment kit for rack installation ;
- Individual channel mode (RMS) : 4 channels of 800W per channel under 2 Ω , 800W under 4 Ω and 400W under 8 Ω ;
- In bridge mode (RMS) : 2 channels of 1600W under 8 Ω and 1600W under 4 Ω ;
- Universal power supply from 100 to 240 VAC ;
- Monitoring via SNMP ;
- KCS Studio software available ;
- Front LEDs : status, signal and limiter. Stand-by touch key

Rated Power / model	KCS DM-4-1600
(1) Continuous 20 Hz-20 kHz for 5s 2 channels driven / (2) Burst power at 20 Hz-20 kHz	
2 Ω (per channel)	4 x 800 W RMS (2)
4 Ω (per channel)	4 x 800 W RMS (1)
8 Ω (per channel)	4 x 400 W RMS (1)
4 Ω Bridge (mono)	2 x 1600 W RMS (1)
8 Ω Bridge (mono)	2 x 1600 W RMS (1)
Performance	
Frequency Response (@ 1 W)	20 Hz to 20 kHz, 1.38dBV/4.82dBV
Total Harmonic Distortion (THD)	< 0,01%, 20 Hz - 20 kHz
Maximum Instantaneous Output Peak Voltage	90 V
Burst Output Voltage	56,5 V
Efficiency	> 85%
Damping Factor (8 Ω) 20 Hz - 1 kHz	> 200
Signal to Noise Ratio (measured @ 1 kHz)	94 dB
Crosstalk (below rated power)	
@ 1 kHz	-75 dB
@ 20 kHz	-58 dB
Input sensitivity for full rated power	
@ 8 Ω	Adjustable 0,775 V or 1 V or 1,4 V or 20x or 40x
Input impedance (nominal)	
Balanced	20 k Ω
Unbalanced	10 k Ω
Consumption	
Maximum Consumption @ 1 kHz Sinewave	Lower than 2 kW
Maximum Stand-By Consumption	6 W
Front Panel	
Indicators	4 x Bicolor Green / Red LEDs (Ready / Fault) 4 x Bicolor Green / Yellow LEDs (Signal/ Limiter)
Control	Touch Sensor (Stand-By)
Rear Panel	
Input Connectors	4 x XLR Connectors
Output Connectors	4 x Speaker Connectors
Network Connectors	1 x RJ45 Connector
Construction	
Monitoring	TCP/IP Protocol
Protection	Protection against Short circuits, no-load, on/off muting, RF interference
Ventilation	Flow-through ventilation from front to back
Cooling	Internal heat sinks with forced air. Fan cooled, speed regulated, thermal protection
Power cable specification	Plug : 14 A, 90-240 V @ 50-60 Hz - Wire : 3 x 1,0 mm ²
Chassis size (mm) / W x D x H	1U 482 x 510 x 44
Net Weight	7,7 Kg

Upgrade Your Monitoring. Protect the Experience.

Close the Gap in Cinema Audio Monitoring

The Challenge

Most cinema exhibitors and service providers monitor projection— yet amplifiers and speakers are often left unchecked. This blind spot can lead to undetected speaker failures, compromising the sound experience without anyone knowing.

The Risk

- Customers may experience poor audio quality.
- Some may complain — many won't.
- Worst case: they leave disappointed and never return.

Without visibility, the faulty speaker remains broken, impacting overall sound performance and damaging audience satisfaction.

Add monitoring where it matters most.

By integrating real-time oversight of amplifiers and speakers, your operations team can :

- Detect issues instantly
- Act proactively before customers notice
- Ensure consistent, premium audio quality
- Protect your brand and revenue

Let your customers
enjoy the
immersive sound
they expect

...

every time

Built for integration

- Standard SNMP MIBs (Management Information Bases)
- A dedicated API for real-time monitoring



At your fingers tip with KCS STUDIO

Volume Setup

Adjust the volumes of the channels independently

Link Setup

Link the channels to each other and set them up in Bridge mode

Sensibility Setup

Adjust the signal input sensitivity from
0,77 V
1,44 V
2,88 V
20 x
40 x

Configuration

Identify and name the amplifier and its respective channels

Monitoring

Real-time monitoring of each channel of the amplifier, check the connected amplifier, have access to the version of the Software, in addition to observing the temperature of the channels, with constant and accurate updates

The screenshot displays the KCS Studio web interface, titled "KCS Studio" and "KELONIK CINEMA SOUND". The interface is organized into several sections:

- Link Setup:** Contains three toggle switches for "Link/Bridge A/B", "Link B/C", and "Link/Bridge C/D", all currently set to "Off".
- Volume Setup:** Features four horizontal sliders for "Volume A", "Volume B", "Volume C", and "Volume D", each with a scale from 0 to 20.
- Sensibility Setup:** Includes a dropdown menu labeled "Select..." for adjusting signal input sensitivity.
- Configuration:** Contains input fields for "IP Address" (192.168.1.10), "Gateway" (192.168.1.1), "Mask" (255.255.255.0), and "Amp ID". It also has fields for "Channel IDs" for Ch A, Ch B, Ch C, and Ch D.
- Connection:** Shows a "Not Connected" status with a red dot. It includes an "IP Address" field and icons for connection methods: Ethernet, USB, Bluetooth, and a refresh button.
- Monitoring:** Displays status information for the amplifier, including Model, Firmware, Temperature, and Power state, all currently marked as "Unknown". It also shows the status for each channel (A, B, C, D), all marked as "Unknown".

At the bottom left, a status bar indicates "Status: Waiting for connection".

Connection

To connect the amplifier to KCS Studio for the first time, use the default network configuration (the connection will later be made with the user-defined configuration). In this same menu, it is also possible to turn the amplifier on and off while it is in operation

Warranty

KCS products are designed and manufactured to the highest quality standards. However, if something does go wrong with the product, KELONIK Group and its division KCS warrant free of charge labour (exclusion may apply) and replacement parts in any country served by an official KCS distributor. This warranty complements any national or regional law obligations of dealers or national distributors and does not affect your statutory rights as a customer.

Note: Please contact your relevant national distributor on 'Find Dealers' for details.

Terms And Conditions

This warranty:

Is valid only for products purchased from an authorized KCS distributor.

Is not valid for any counterfeit products. Any product received for service that KELONIK Group or its division KCS determines as fake will not be returned. The sale and distribution of counterfeit products is illegal.

Is valid from the date of purchase for a period of:

- 5 years for Cinema Loudspeakers,
- 2 years for Amplifiers,
- 1 year for All Enclosures and Spare Components,
- 90 days for other external accessories such as brackets, cables etc.

Except that exclusions apply in certain countries in line with national law. Please consult the KCS distributor in your country for detailed information.

Is limited to the repair of the equipment (which could be a repair or replacement at our discretion, neither of which affects your original warranty). Neither transportation, nor any other costs, nor any risk for removal, transportation and installation of products is covered by this warranty.

Is only valid for the original owner. It is not transferable.
Will not be applicable in cases other than defects in materials and/or workmanship at the time of purchase and will not be applicable:

For deterioration of component parts, the nature of which is to become worn or depleted with use.

For damages caused by incorrect installation, connection or packing.

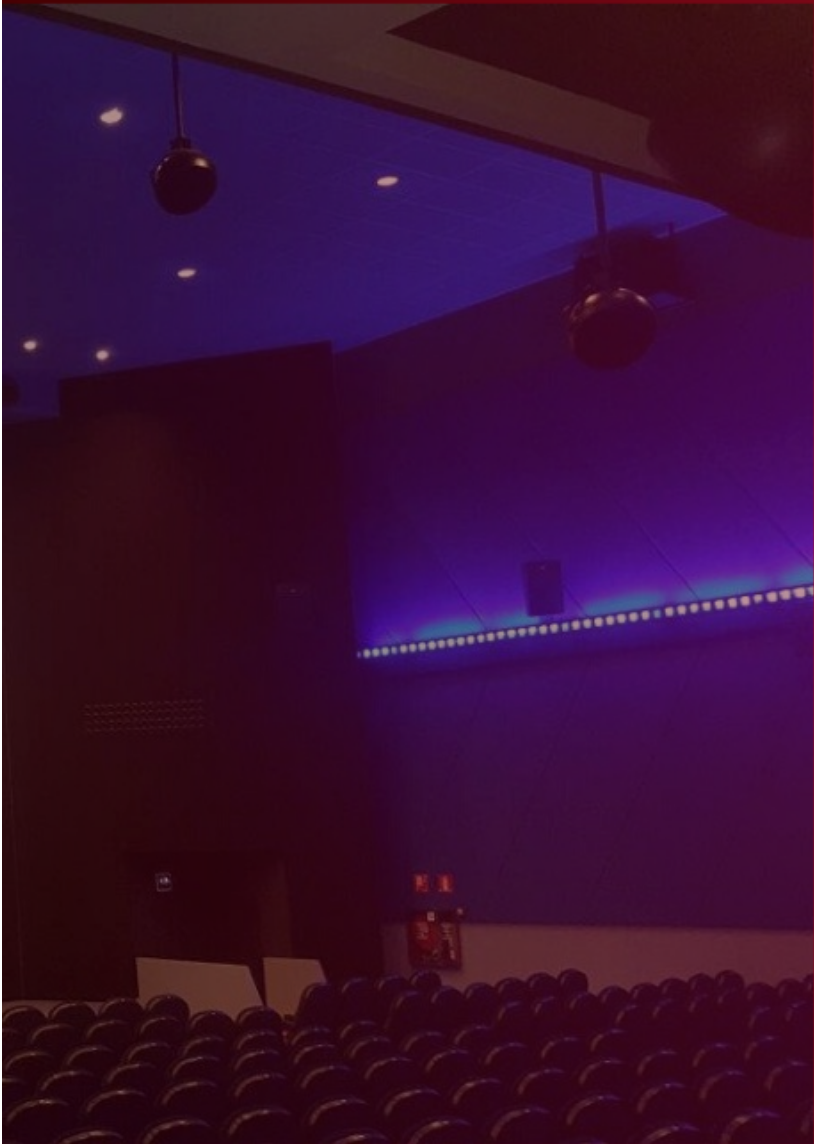
For damages caused by any use other than correct use described in the user manual, negligence, modifications, or use of parts that are not made or authorized by KELONIK Group and its division KCS.

For damages caused by faulty, unsuitable or ancillary equipment.

For damages caused by accidents, lightning, water, fire heat, war, public disturbances or any other cause beyond the reasonable control of KELONIK Group, its division KCS and its appointed distributors.

For products whose serial number has been altered, deleted, removed or made illegible.

If repairs or modifications have been executed by an unauthorized person.



How To Claim Repairs Under Warranty

Should you have any concerns regarding the performance of your product, please use the following procedure:

Call the KCS national distributor in your country of residence.

You can find all contact details by clicking on 'Find Dealers' and selecting the appropriate country.

Our representative will discuss your concerns. If it is found necessary to return the product for repair, you may be given a Return Merchandise Authorisation after filling the form 'Return Merchandise Authorisation Request'.

You should not return the product without this Authorisation number.

To validate your warranty, you will need to produce a scanned copy of Sales Invoice or other proof of ownership and date of purchase.

Any other questions or concerns regarding this warranty can be answered by contacting by Phone, Fax or Email the KELONIK Group – KCS Division

Phone: +34 93 300 43 61
Email: sk@kelonik.com

Cinema Product Index

2-way Screen systems

#	References	Amplification	Frequency	Nom Impedance	AES Power (1)	Continuous Program	Element	Qty	Ø in inches	Sensitivity 1 W/1 m (4)	LF Sensitivity 1 W/1 m (4)	MF Sensitivity 1 W/1 m (4)	HF Sensitivity 1 W/1 m (4)	Bracket	Horizontal Angle °	Vertical Angle °	Net Weight	Dimensions cm H x W x D
47000-A	S-1500	P	40Hz-20kHz	8 Ω	500 W	1000 W	LF Driver	1	15"	98 dB SPL				F	90°	45°	34,25 kg	98 x 63 x 26
							HF Driver	1	2"									
47050-A	S-1800	P	30Hz-20kHz	8 Ω	500 W	1000 W	LF Driver	1	15"	99 dB SPL				A	90°	90°	38,55 kg	131 x 63 x 26
							HF Driver	1	2"									
47002-A	S-2000	P	40Hz-20kHz	8 Ω	700 W	1400 W	LF Driver	1	15"	98 dB SPL				F	90°	45°	46,80 kg	131 x 63 x 27
							HF Driver	1	4"									
47003-A	S-2000D	P	40Hz-20kHz	4 Ω	1400 W	2800 W	LF Driver	2	15"	101 dB SPL				F	90°	45°	84,70 kg	131 x 126 x 27
							HF Driver	1	4"									
47060-A	S-2300	P	35Hz-20kHz	4 Ω	600 W	1200 W	LF Driver	2	15"	97 dB SPL				A	90°	40°	50,10 kg	131 x 63 x 47
							HF Driver	1	2"									
47062-A	S-2400	P	35Hz-20kHz	4 Ω	1000 W	2000 W	LF Driver	2	15"	100 dB SPL				A	90°	40°	56,25 kg	130 x 63 x 47
							HF Driver	1	3"									
47007-A	S-2500_SP-2	P	35Hz-20kHz	4 Ω	1400 W	2800 W	LF Driver	2	15"	101 dB SPL				A	90°	45°	70,15 kg	140,5 x 63 x 47
							HF Driver	1	4"									
47011-A	S-3000_SP-3	P	35Hz-20kHz	4 Ω	1400 W	2800 W	LF Driver	2	15"	102 dB SPL				A	90°	60°	80,40 kg	181,5 x 87,5 x 94,5
							HF Driver	1	4"									
47051-A	S-1801	Bi	30Hz-20kHz	8 Ω	500 W	1000 W	LF Driver	1	15"		99 dB SPL		108 dB SPL	A	90°	90°	38,25 kg	131 x 63 x 26
				8 Ω	50 W	100 W	HF Driver	1	2"									
47004-A	S-2001	Bi	40Hz-20kHz	8 Ω	700 W	1400 W	LF Driver	1	15"		98 dB SPL		110 dB SPL	F	90°	45°	45,60 kg	131 x 63 x 27
				8 Ω	120 W	240 W	HF Driver	1	4"									
47005-A	S-2001D	Bi	40Hz-20kHz	4 Ω	1400 W	2800 W	LF Driver	2	15"		101 dB SPL		110 dB SPL	F	90°	45°	78,10 kg	131 x 126 x 27
				8 Ω	120 W	240 W	HF Driver	1	4"									
47063-A	S-2401	Bi	35Hz-20kHz	4 Ω	1000 W	2000 W	LF Driver	2	15"		100 dB SPL		109 dB SPL	A	90°	40°	55,25 kg	130 x 63 x 47
				8 Ω	100 W	200 W	HF Driver	1	3"									
47009-A	S-2501_SP-2	Bi	35Hz-20kHz	4 Ω	1400 W	2800 W	LF Driver	2	15"		101 dB SPL		110 dB SPL	A	90°	45°	68,15 kg	140,5 x 63 x 47
				8 Ω	120 W	240 W	HF Driver	1	4"									
47013-A	S-3001_SP-3	Bi	35Hz-20kHz	4 Ω	1400 W	2800 W	LF Driver	2	15"		101 dB SPL		112 dB SPL	A	90°	60°	78,40 kg	181,5 x 87,5 x 94,5
				8 Ω	120 W	240 W	HF Driver	1	4"									
47014-A	S-5000	Bi	35Hz-20kHz	4 Ω + 4 Ω	2800 W	5600 W	LF Driver	4	15"		105 dB SPL		112 dB SPL	A	90°	60°	129,40 kg	279,5 x 87,5 x 94,5
				8 Ω	120 W	240 W	HF Driver	1	4"									

3-way Screen systems

#	References	Amplification	Frequency	Nom Impedance	AES Power (1)	Continuous Program	Element	Qty	Ø in inches	Sensitivity 1 W/1 m (4)	LF Sensitivity 1 W/1 m (4)	MF Sensitivity 1 W/1 m (4)	HF Sensitivity 1 W/1 m (4)	Bracket	Horizontal Angle °	Vertical Angle °	Net Weight	Dimensions cm H x W x D
47038-A	S-7600	P	30Hz-20kHz	4 Ω	1000 W	2000 W	LF Driver	2	15"	98 dB SPL				A	90°	40°	59,60 kg	155 x 63 x 47
							MF Driver	1	6,5"									
							HF Driver	1	2"									
47039-A	S-7601	Bi	30Hz-20kHz	4 Ω	1000 W	2000 W	LF Driver	2	15"		98 dB SPL		104 dB SPL	A	90°	40°	59,10 kg	155 x 63 x 47
				8 Ω			MF Driver	1	6,5"									
							HF Driver	1	2"									
47054-A	S-7801	Bi	30Hz-20kHz	4 Ω	1000 W	2000 W	LF Driver	2	15"		101 dB SPL		110 dB SPL	A	90°	40°	65,95 kg	199 x 63 x 47
				4 Ω			MF Driver	2	6,5"									
							HF Driver	1	2"									
47056-A	S-7901	Bi	30Hz-20kHz	4 Ω	1000 W	2000 W	LF Driver	2	15"		101 dB SPL		111 dB SPL	A	90°	40°	75,81 kg	269 x 63 x 47
				2 Ω			MF Driver	4	6,5"									
							HF Driver	1	2"									
47064-A	S-8801	Bi	30Hz-20kHz	4 Ω	1000 W	2000 W	LF Driver	2	15"		101 dB SPL		111 dB SPL	A	90°	40°	68,45 kg	199 x 63 x 47
				4 Ω			MF Driver	2	6,5"									
							HF Driver	1	3"									
47066-A	S-8901	Bi	30Hz-20kHz	4 Ω	1000 W	2000 W	LF Driver	2	15"		101 dB SPL		112 dB SPL	A	90°	40°	75,65 kg	269 x 63 x 47
				2 Ω			MF Driver	4	6,5"									
							HF Driver	1	3"									
47055-A	S-7802	Tri	30Hz-20kHz	4 Ω	1000 W	2000 W	LF Driver	2	15"		101 dB SPL	110 dB SPL	112 dB SPL	A	90°	40°	64,75 kg	199 x 63 x 47
				4 Ω			MF Driver	2	6,5"									
				8 Ω			HF Driver	1	2"									
47057-A	S-7902	Tri	30Hz-20kHz	4 Ω + 4 Ω	1000 W	2000 W	LF Driver	2	15"		101 dB SPL	111 dB SPL	112 dB SPL	A	90°	40°	74,90 kg	269 x 63 x 47
				8 Ω			MF Driver	4	6,5"									
							HF Driver	1	2"									
47065-A	S-8802	Tri	30Hz-20kHz	4 Ω	1000 W	2000 W	LF Driver	2	15"		101 dB SPL	110 dB SPL	112 dB SPL	A	90°	40°	69,25 kg	199 x 63 x 47
				4 Ω			MF Driver	2	6,5"									
				8 Ω			HF Driver	1	3"									
47067-A	S-8902	Tri	30Hz-20kHz	4 Ω	1000 W	2000 W	LF Driver	2	15"		101 dB SPL	111 dB SPL	112 dB SPL	A	90°	40°	74,95 kg	269 x 63 x 47
				4 Ω + 4 Ω			MF Driver	4	6,5"									
				8 Ω			HF Driver	1	3"									
TBC1	S-8002	Tri	35Hz-16kHz	4 Ω	1600 W	3200 W	LF Driver	2	18"		101 dB SPL	114 dB SPL	112 dB SPL	A	90°	45°	109,40 kg	228 x 90 x 80,5
				8 Ω			MF Driver	1	4"									
				8 Ω			HF Driver	1	4"									
TBC2	S-8502	Tri	35Hz-16kHz	4 Ω + 4 Ω	3200 W	6400 W	LF Driver	4	18"		104 dB SPL	114 dB SPL	112 dB SPL	A	90°	45°	178,70 kg	228 x 140 x 80,5
				8 Ω			MF Driver	1	4"									
				8 Ω			HF Driver	1	4"									

Cinema Product Index

Surround speakers

#	References	Amplification	Frequency	Nom Impedance	AES Power (1)	Continuous Program	Element	Qty	Ø in inches	Sensitivity 1 W/1 m (4)	LF Sensitivity 1 W/1 m (4)	MF Sensitivity 1 W/1 m (4)	HF Sensitivity 1 W/1 m (4)	Bracket	Horizontal Angle °	Vertical Angle °	Net Weight	Dimensions cm H x W x D
47020-A	SR-8-AN	P	40Hz-20kHz	8 Ω	125 W	250 W	LF Driver HF Driver	1 1	8" 1"	91 dB SPL				F	100°	100°	12,00 kg	46,5 x 45 x 27
47071-A	SR-10-AN	P	50Hz-18kHz	8 Ω	200 W	400 W	LF Driver HF Driver	1 1	10" 1"	96 dB SPL				F	100°	60°	17,00 kg	56 x 48 x 29
47072-A	SR-12-N	P	50Hz-20kHz	8 Ω	300 W	600 W	LF Driver HF Driver	1 1	12" 2"	97 dB SPL				F	90°	60°	15,70 kg	50 x 53 x 27
47105-A	SR-27-N	P	60Hz-20kHz	8 Ω	200 W	400 W	LF Driver HF Driver	1 1	8" 1"	94 dB SPL				A	90°	90°	8,50 kg	48 x 28 x 26
47047-A	SR-28-N	P	50Hz-20kHz	8 Ω	360 W	720 W	LF Driver HF Driver	1 1	12" 1"	96 dB SPL				A	90°	50°	16,60 kg	65 x 38 x 34,6
47049-A	SR-29-N	P	50Hz-20kHz	8 Ω	400 W	800 W	LF Driver HF Driver	1 1	12" 2"	99 dB SPL				A	90°	50°	18,35 kg	65 x 38 x 34,6
47090-A	SR-50	P	50Hz-20kHz	8 Ω	360 W	720 W	LF Driver HF Driver	1 1	12" 1"	97 dB SPL				F	100°	100°	18,50 kg	66 x 40 x 35,2
47091-A	SR-60	P	50Hz-20kHz	8 Ω	600 W	1200 W	LF Driver HF Driver	1 1	12" 1"	101 dB SPL				F	100°	100°	20,00 kg	66 x 40 x 35,2
47087-A	TC-12	P	63Hz-20kHz	4 Ω	300 W	600 W	LF Driver HF Driver	1 1	12" 2"	96 dB SPL				A	90° Conical		11,00 kg	50 Ø x 29 Depth
47100-A	TC-14	P	63Hz-20kHz	4 Ω	500 W	1000 W	LF Driver HF Driver	1 1	12" 2"	97 dB SPL				A	90° Conical		10,80 kg	50 Ø x 29 Depth

Subwoofers

#	References	Amplification	Frequency	Nom Impedance	AES Power (1)	Continuous Program	Element	Qty	Ø in inches	Sensitivity 1 W/1 m (4)	LF Sensitivity 1 W/1 m (4)	MF Sensitivity 1 W/1 m (4)	HF Sensitivity 1 W/1 m (4)	Bracket	Horizontal Angle °	Vertical Angle °	Net Weight	Dimensions cm H x W x D
47085-A	C-115-AR	P	40Hz-125Hz	8 Ω	800 W	1600 W	LF Driver	1	15"		93 dB SPL						33,00 kg	77,5 x 46,5 x 46
47080-A	C-118-PLP	P	40Hz-500Hz	8 Ω	400 W	800 W	LF Driver	1	18"		96 dB SPL						31,30 kg	98 x 63 x 26
47118-A	CX-118	P	24Hz-500Hz	8 Ω	800 W	1600 W	LF Driver	1	18"		98 dB SPL						43,10 kg	98 x 63 x 47
47120-A	CX-118-R	P	24Hz-500Hz	8 Ω	800 W	1600 W	LF Driver	1	18"		98 dB SPL						48,15 kg	98 x 63 x 47
47119-A	CX-218	P	24Hz-500Hz	4 Ω	1600 W	3200 W	LF Driver	2	18"		101 dB SPL						68,70 kg	100 x 70 x 72
47121-A	CX-218-R	P	24Hz-500Hz	4 Ω	1600 W	3200 W	LF Driver	2	18"		101 dB SPL						74,50 kg	100 x 70 x 72
47122-A	CX-118+	P	20Hz-500Hz	8 Ω	1000 W	2000 W	LF Driver	1	18"		99 dB SPL						44,50 kg	98 x 63 x 47
47124-A	CX-118-R+	P	20Hz-500Hz	8 Ω	1000 W	2000 W	LF Driver	1	18"		99 dB SPL						49,00 kg	98 x 63 x 47
47123-A	CX-218+	P	20Hz-500Hz	4 Ω	2000 W	4000 W	LF Driver	2	18"		102 dB SPL						70,30 kg	100 x 70 x 72
47125-A	CX-218-R+	P	20Hz-500Hz	4 Ω	2000 W	4000 W	LF Driver	2	18"		102 dB SPL						74,80 kg	100 x 70 x 72

Background music

#	References	Amplification	Frequency	Nom Impedance	AES Power (1)	Continuous Program	Element	Qty	Ø in inches	Sensitivity 1 W/1 m (4)	LF Sensitivity 1 W/1 m (4)	MF Sensitivity 1 W/1 m (4)	HF Sensitivity 1 W/1 m (4)	Bracket	Horizontal Angle °	Vertical Angle °	Net Weight	Dimensions cm H x W x D
47069-A	SR-7	P	65Hz-22kHz	8 Ω	100 W	200 W	LF Driver HF Driver	2 1	4" 1"	89 dB SPL				A	80°	70°	2,80 kg	34 x 15 x 15

Nota :

- (1) - Based on a 2 hours test using a continuous 6 dB crest factor pink noise signal band limited according to IEC 268-1 (1985).
- (2) - Rating based on test signal of filtered random noise conforming to the International Standard IEC 268-1 (pink noise with 12 dB per octave roll-off below 40 Hz and above 5000 Hz with a peak-to average ratio of 6 dB).
- (3) - Passive Bi-amplification, with bass and treble connected separately.
- (4) - Free field sensitivity (Half Space sensitivity +3 dB)

Legend :

Passive mode Amplification **P**
Bi-Amplification mode **Bi**
Tri-Amplification mode **Tri**

A - Adjustable support / bracket
F - Fixed support / bracket



KELONIK CINEMA SOUND

www.kcsspeakers.com



Barcelona – Tel.: +34 93 300 43 61
sk@kelonik.com – www.kelonik.com